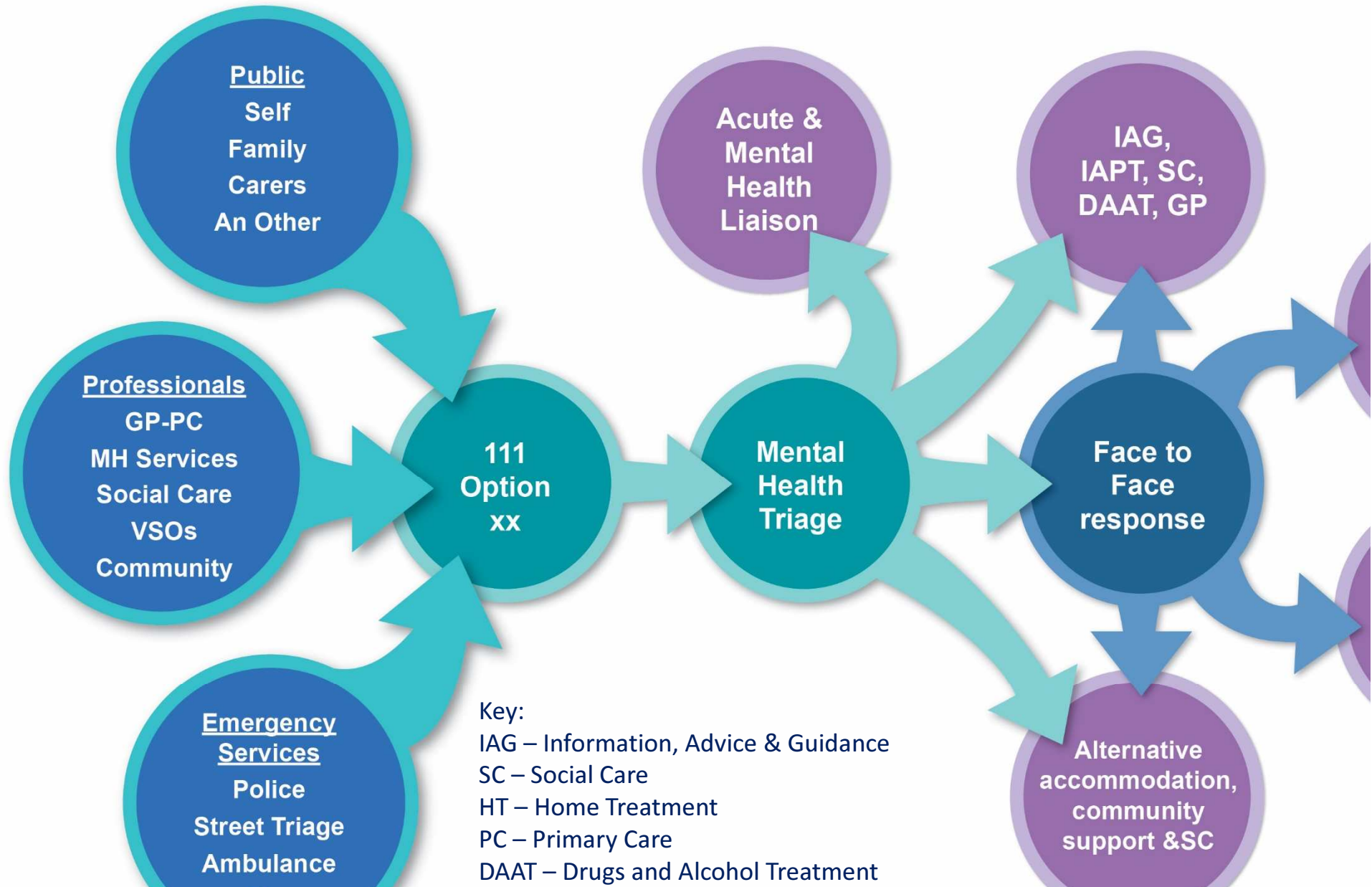
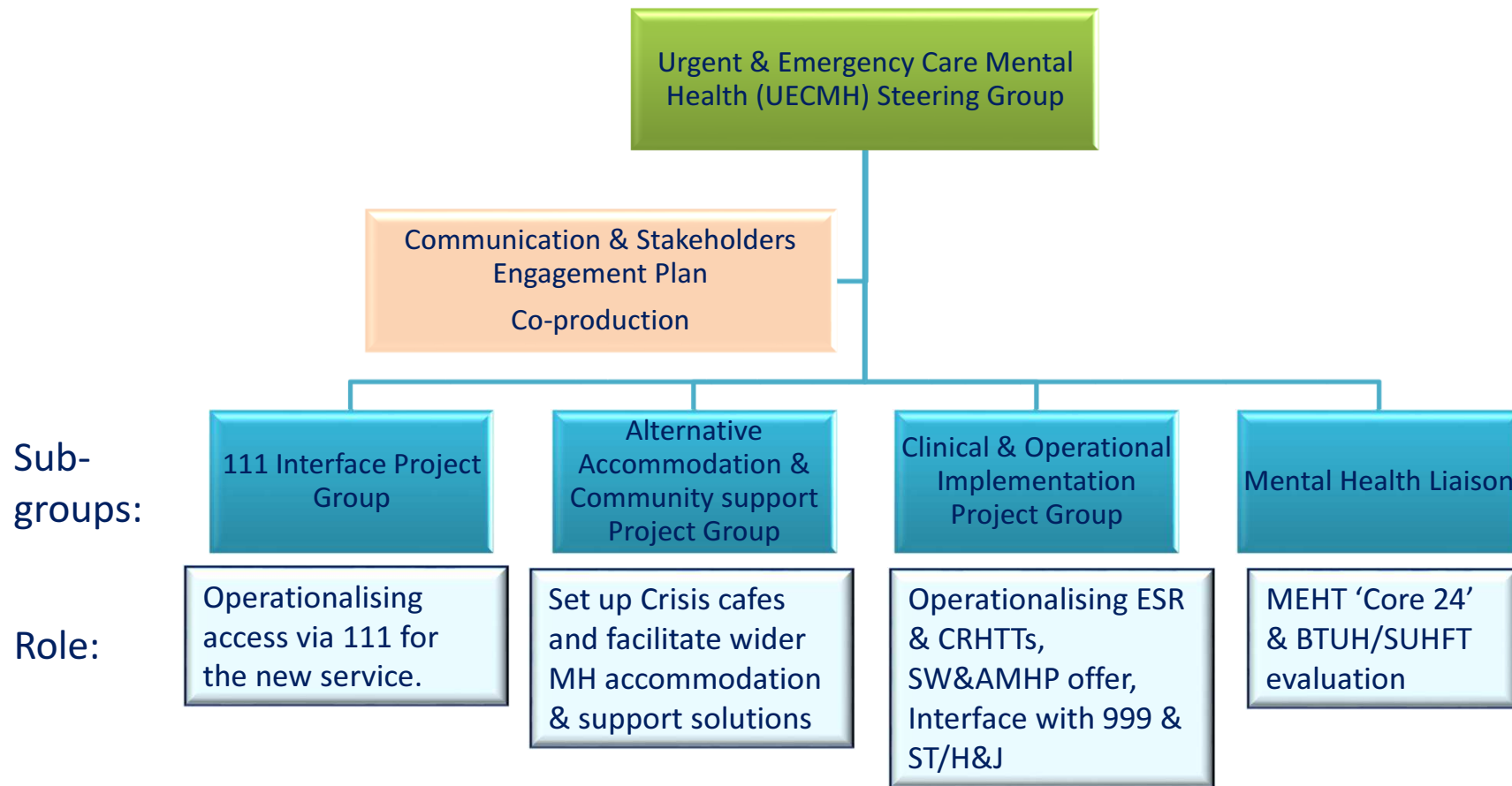


Mid & South Essex STP UECMH – 24/7 MH Emergency Response and Crisis Care

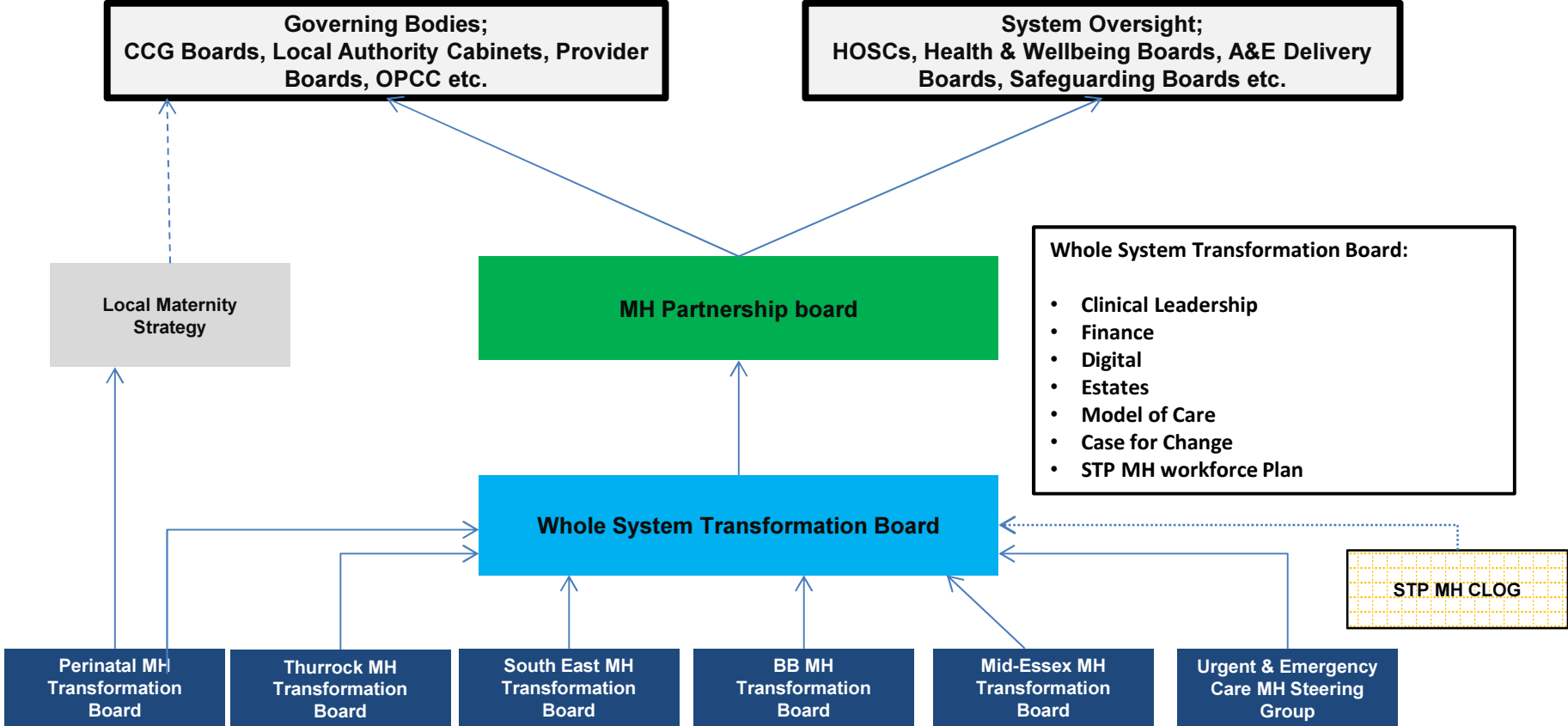
MSE STP 24-7 MH Emergency Response Pathway



Project implementation structure



Mid & South Essex STP Mental Health Transformation Governance



Locality MH Transformation Boards:

- IAPT expansion (IAPT/LTC)
- IAPT standards
- Community / primary care mental health
- Early Intervention in Psychosis
- Physical Health and SMI
- Dementia Diagnosis
- Mental Health Investment Standard

Each CCG is responsible for ensuring transformation moves into BAU and is reported into SDOG

Urgent & Emergency Care:

- Mental Health Liaison Services (RAID)
- Out of Area Placements
- 24/7 Crisis Resolution Home Treatment
- Suicide Reduction (Public Health)

STP is Responsible for Urgent & Emergency Care Transformations moving into BAU and is reported into SDOG

Key milestones

Objective	Action/task	Milestone
24/7 MH Emergency Response and Crisis Care business case	<ul style="list-style-type: none"> Development of the model of care, workforce plan, investment plan and benefits realisation plan 	31.03.2019
Long Term Plan action	<ul style="list-style-type: none"> Transformation funds bids 	31.07.2019
Implementation development plan	<ul style="list-style-type: none"> Service specification Stakeholder engagement Project plan Communication plan 	31.10.2019*
Governance	<ul style="list-style-type: none"> STP MH Partnership Board Respective Partners' sign off 	01.11.2019*
Mobilisation	<ul style="list-style-type: none"> Recruitment & staff development Set up of ERS Set up of Crisis cafes Reconfiguration of south CRHTTs Phased implementation 	01.12.2019*
Service launch	<ul style="list-style-type: none"> Go live of the new service 	01.04.2020

* **Indicative – likely to be revised**