

 thurrock.gov.uk

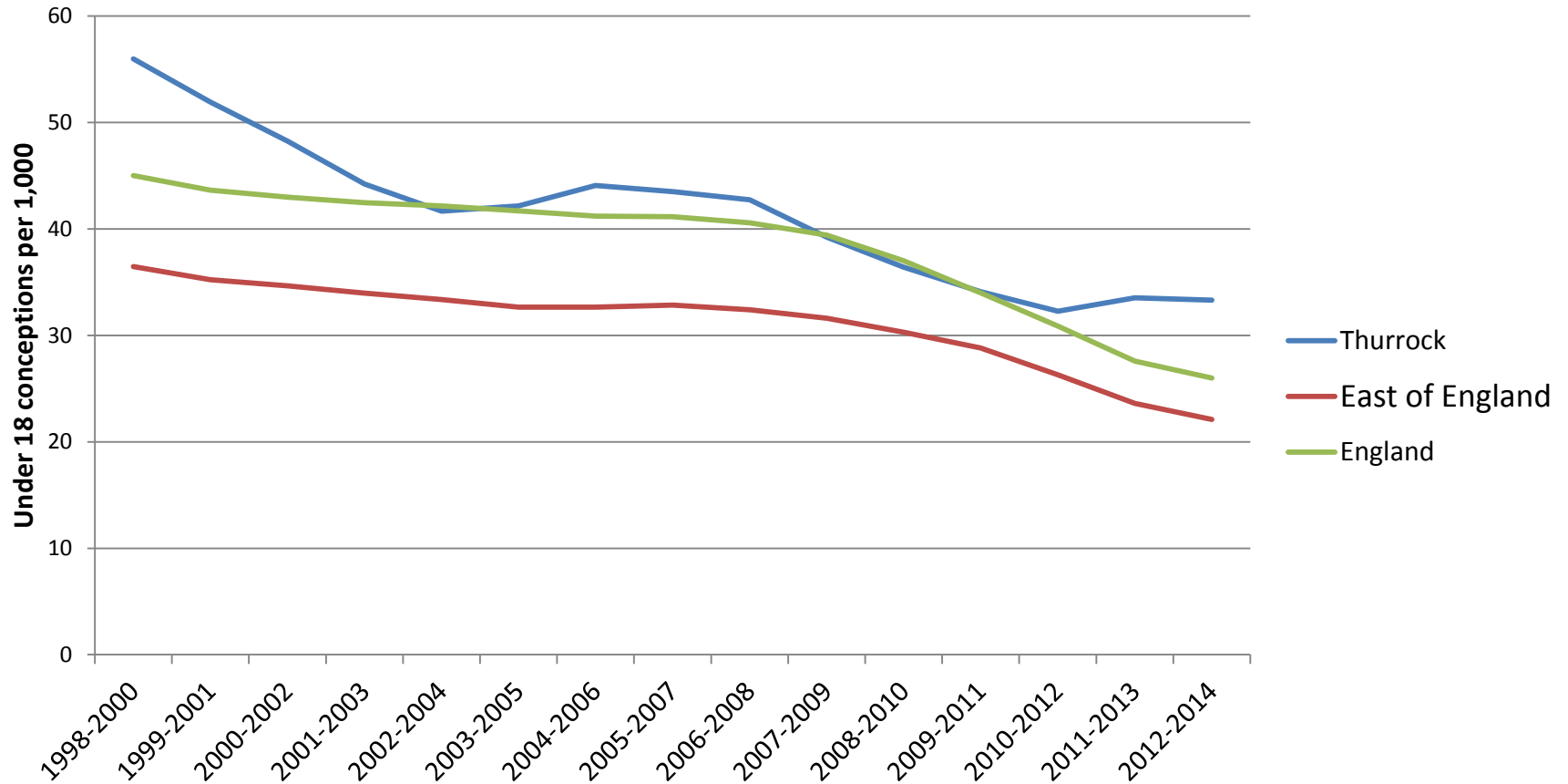
Health and Wellbeing Strategy Action Plan Teenage Pregnancy



Joanne Pitt, Public Health Manager
Tim Elwell-Sutton, Consultant in Public Health

Where are we now?

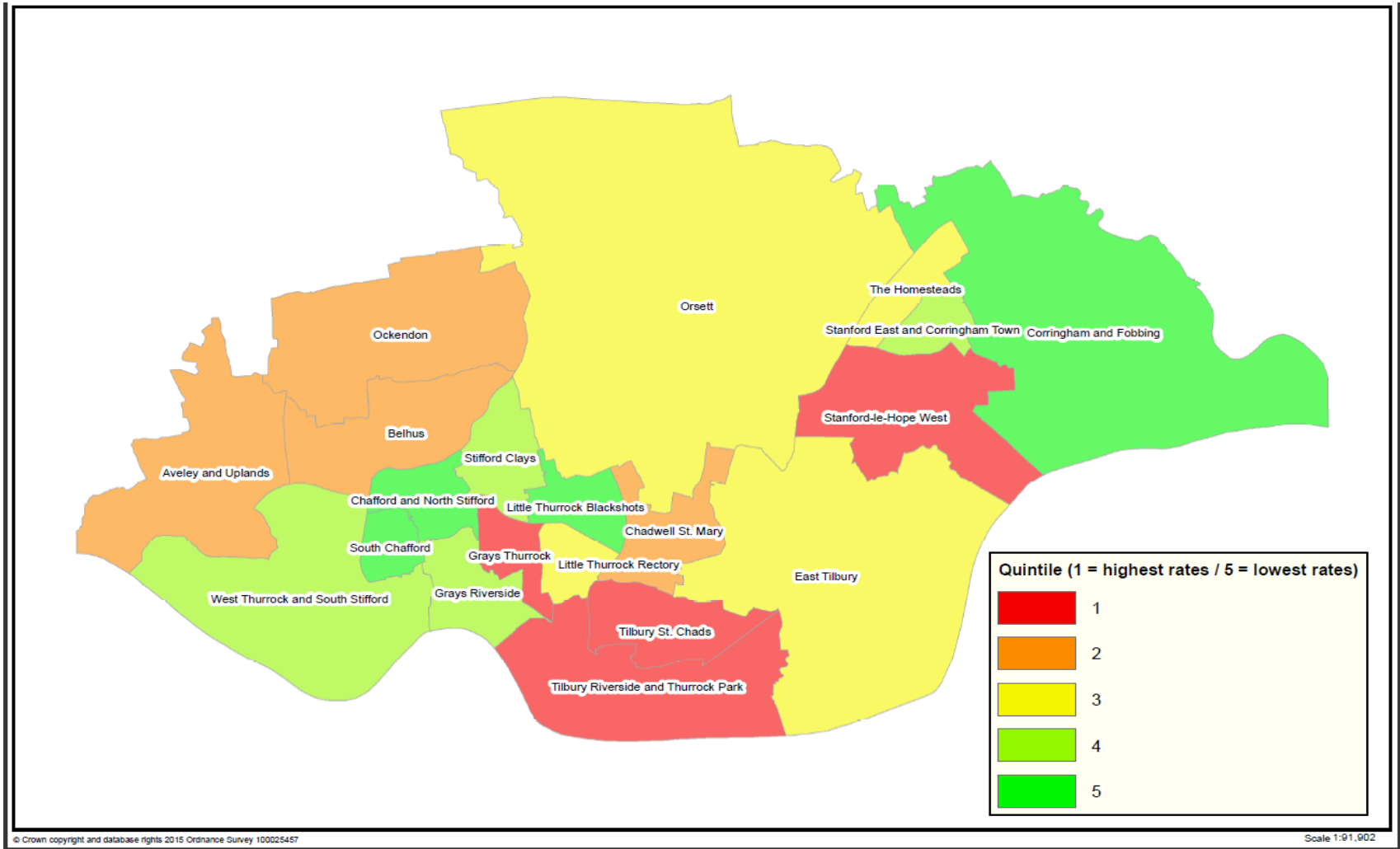
Trends in teenage conceptions 1998 - 2014



Source:ONS

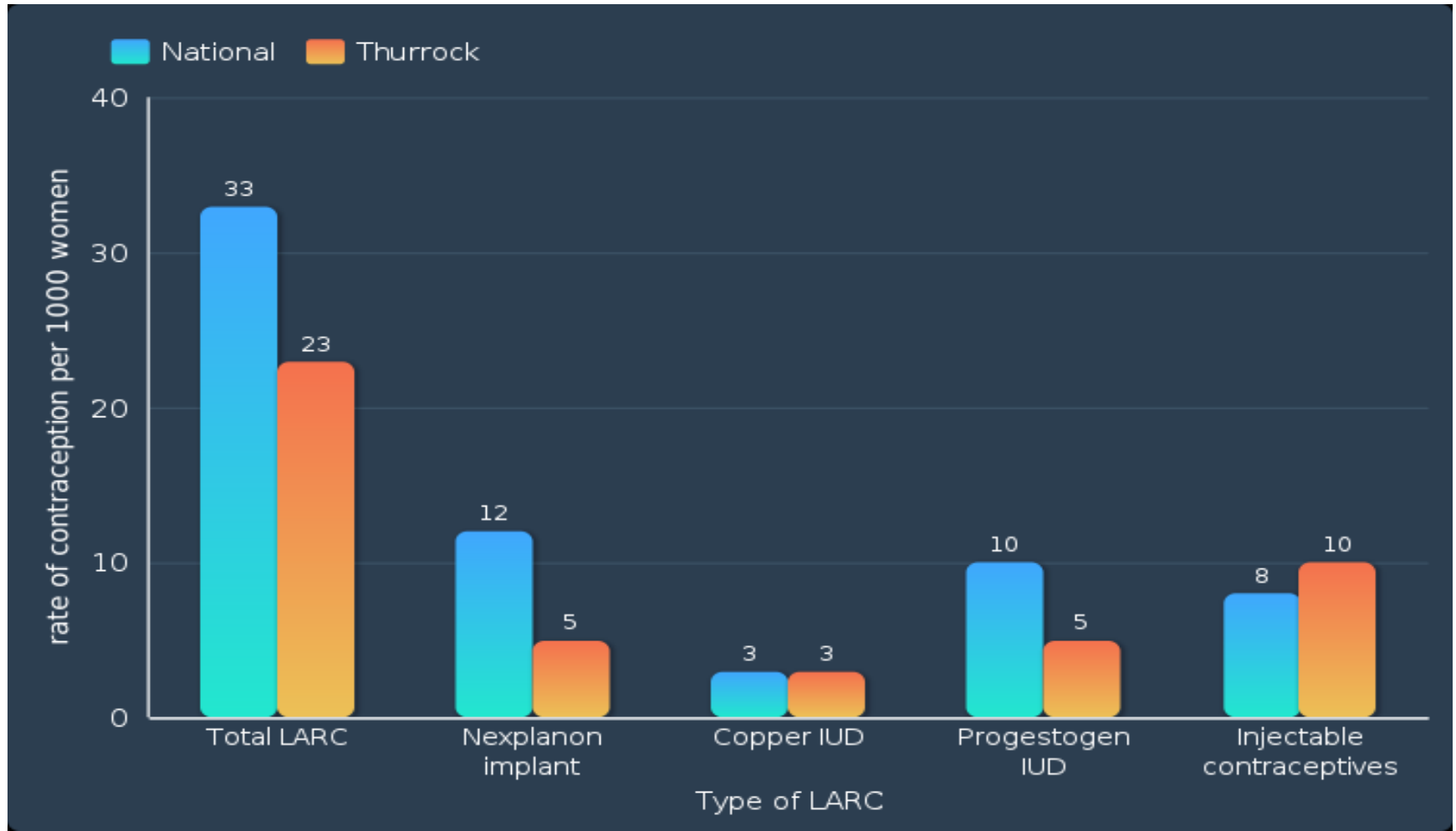
Where are we now?

Teenage conceptions by ward 2011 – 2013



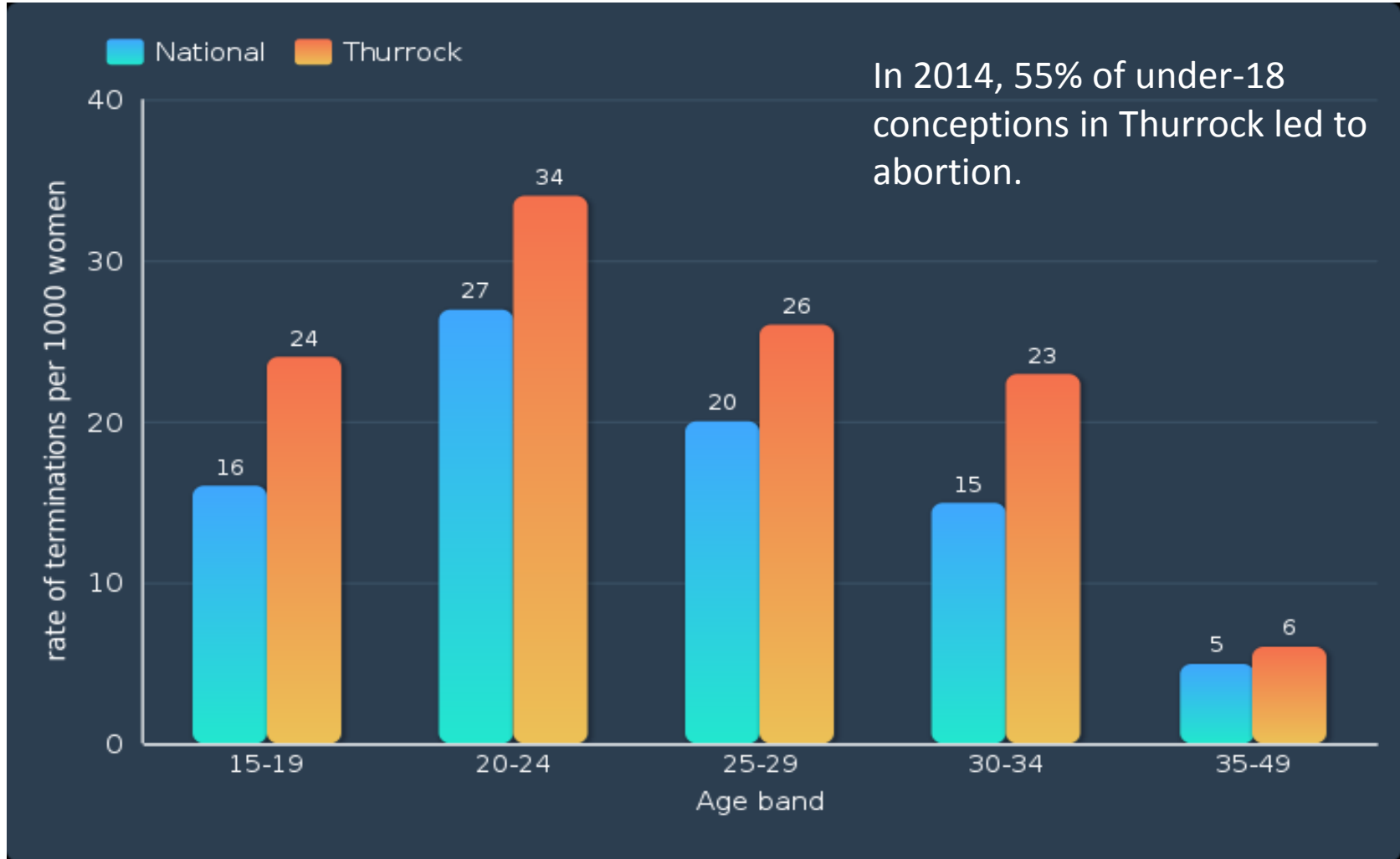
Where are we now?

Long Acting Reversible Contraception (LARC) uptake



Where are we now?

Termination of pregnancy by age group



Where are we now?

Consequences of teenage pregnancy

- Infant mortality is 60% higher
- Post –natal depression is 3 times more common
- Poorer educational outcomes for parents
- Poorer employment prospects
- Greater risk of parents and children living in poverty in later life
- Significant costs to health and social care

Where do we want to be?

- Health and Wellbeing Strategy Indicator:
Under-18 conception rate per 1,000 (15 – 17 year olds)
- Current rate:
 - Rate in 2014: 25.5 per 1,000
 - Average 2012 – 2014: 30.7 per 1,000
- Target for 2021 is **20 per 1,000**

How will we get there?

Education and contraception!

- Strengthen sexual and reproductive education in schools
- Improve access to contraception
- Strengthen primary care delivery of family planning
- Evaluation and multi-agency working



Thank You